

INDY

COLLECTION 2025

balta
home



IN & OUTDOOR



LESS FOOTPRINT
MORE RUG

INDY

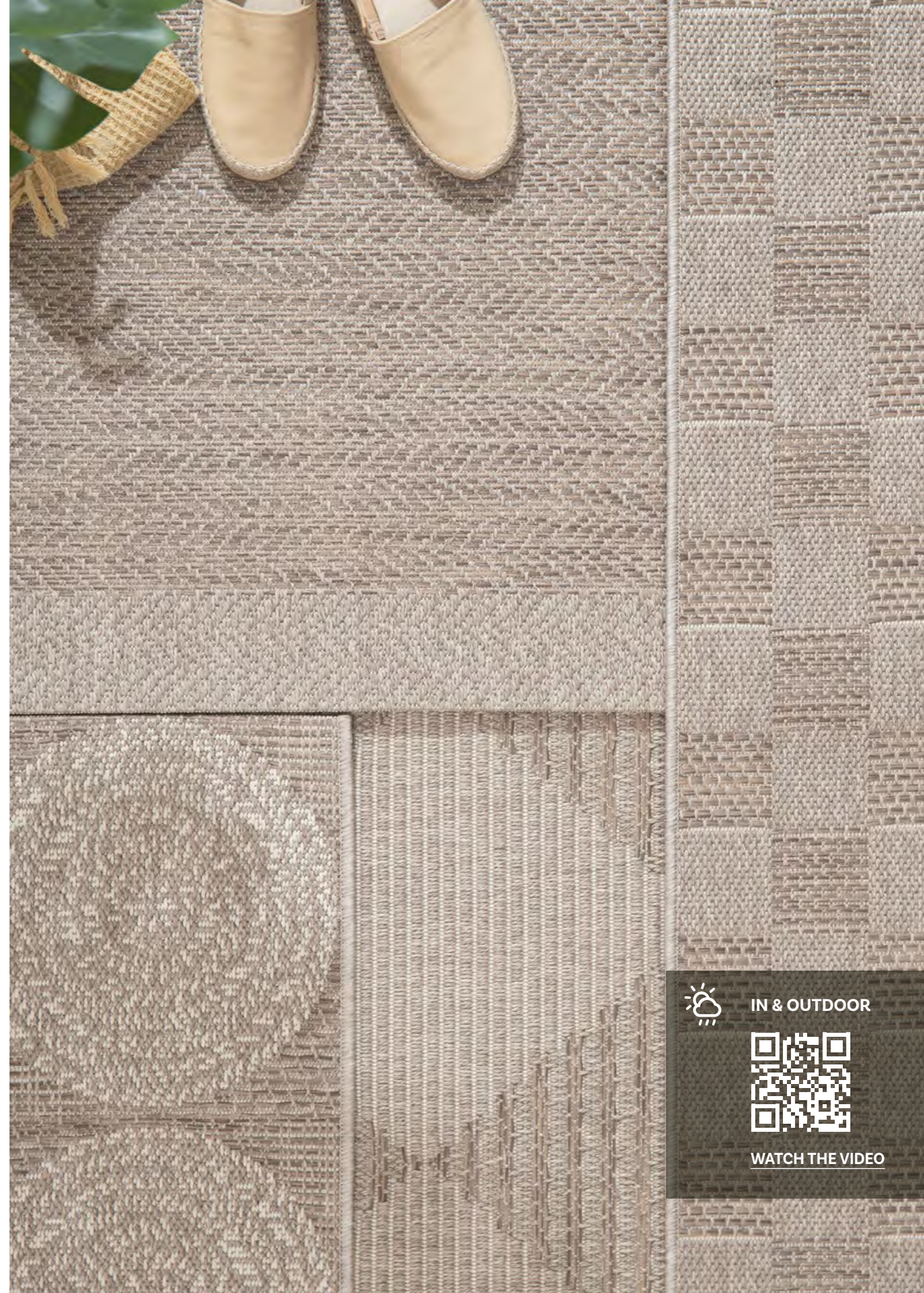
0201 | FLATWEAVE

A high-quality durable flatweave collection, made with the best polypropylene yarns in natural, timeless colours. With its contemporary sisal look, our Indy collection is suitable to use in- & even outdoors. Our rugs protect your floor & they create a cosy outdoor way of living.

Clb 2011



[WATCH THE VIDEO](#)



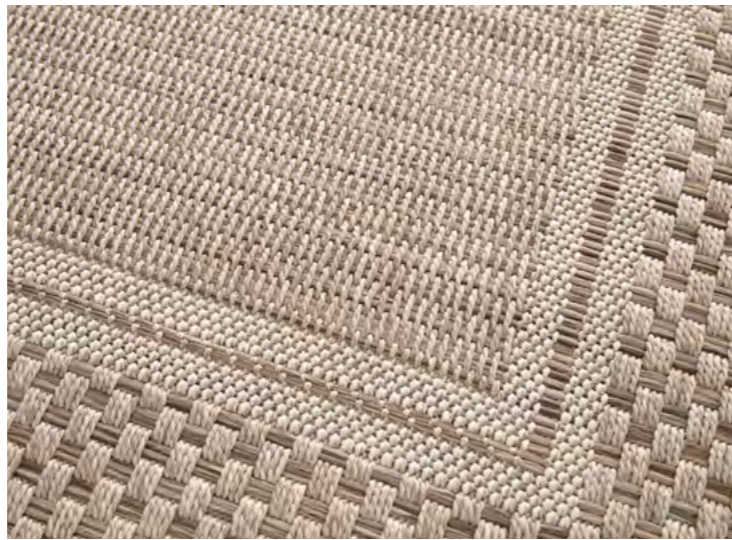
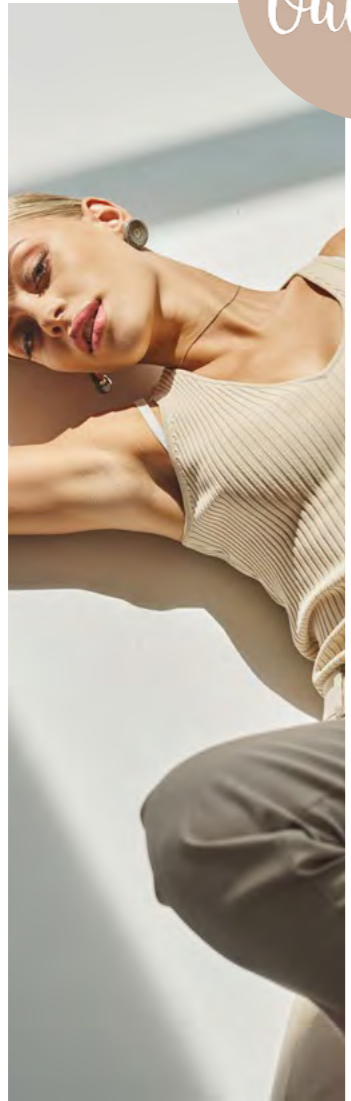
IN & OUTDOOR



[WATCH THE VIDEO](#)



In &
Outdoor



46201-051
see picture

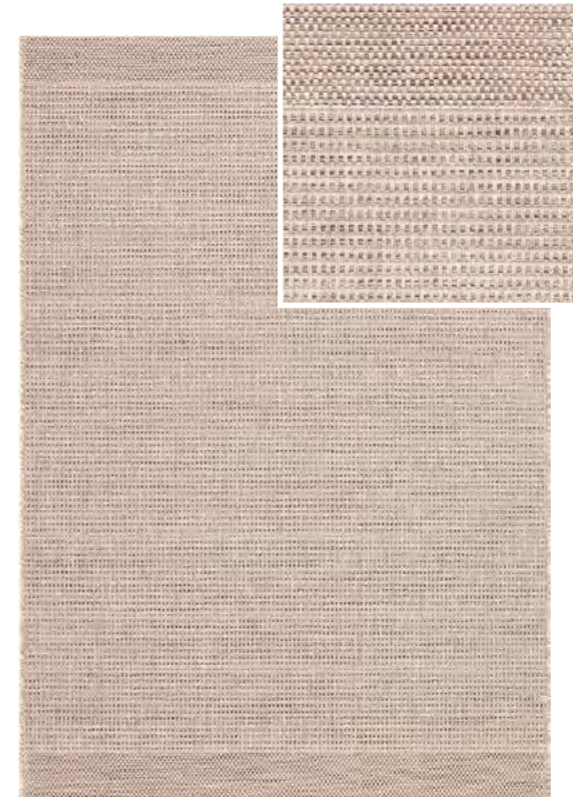


46203-651
see picture





46204-651
see picture



46206-051
see picture



46206-651

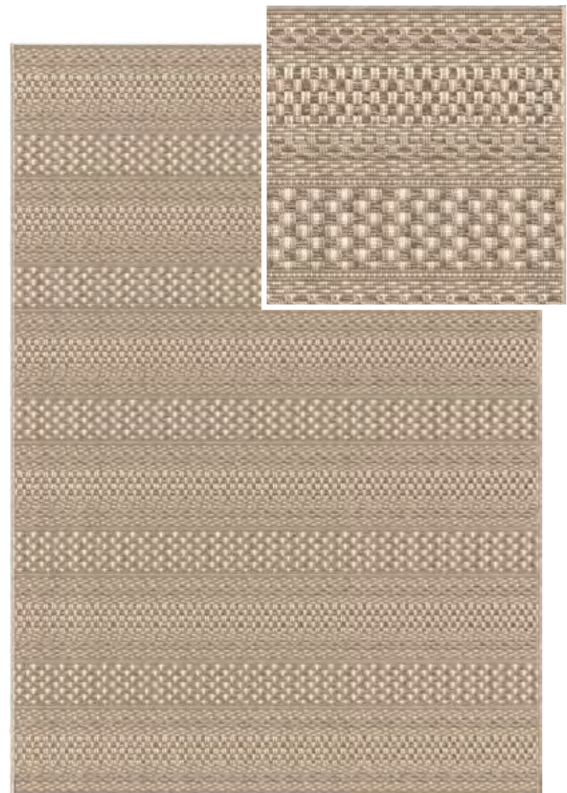




46207-051



46207-651



46209-651

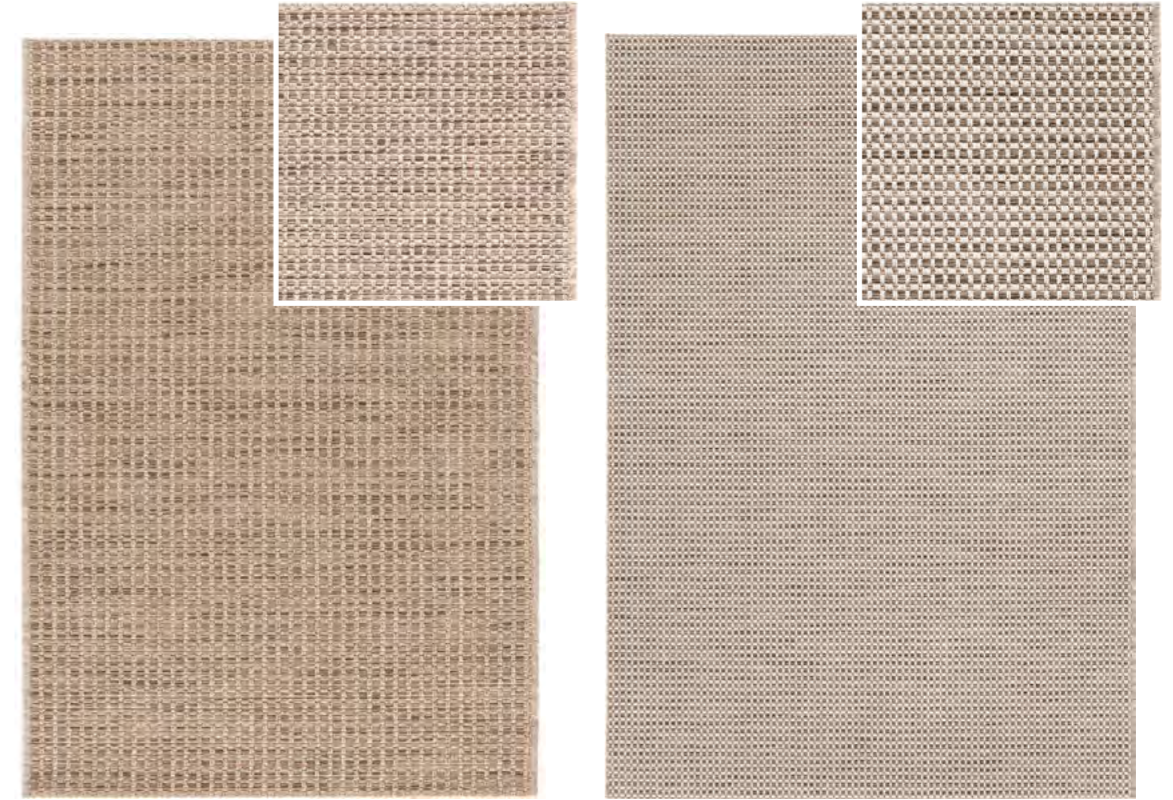
see picture



46213-051



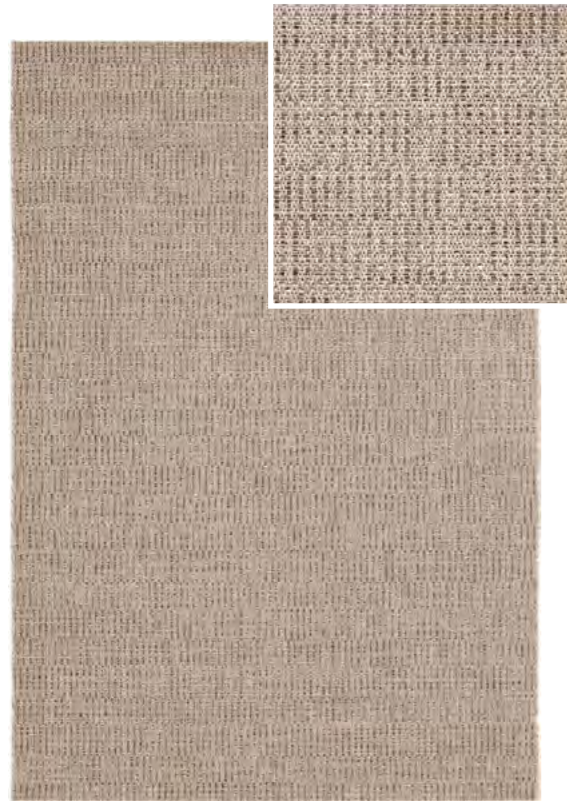
46213-551



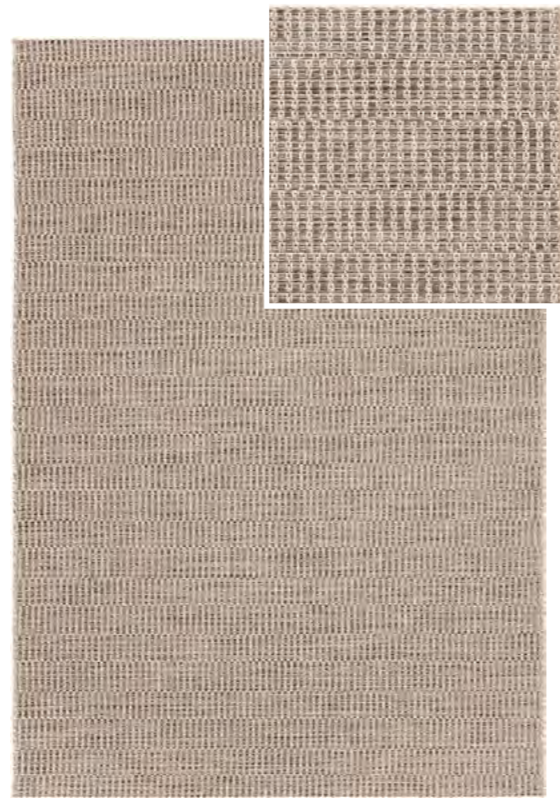
46215-051
see picture

46215-651
see picture





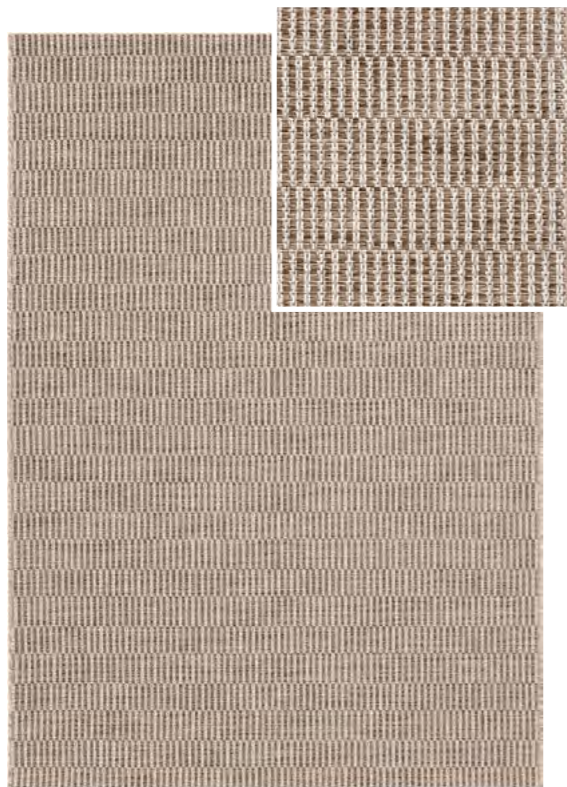
46218-051



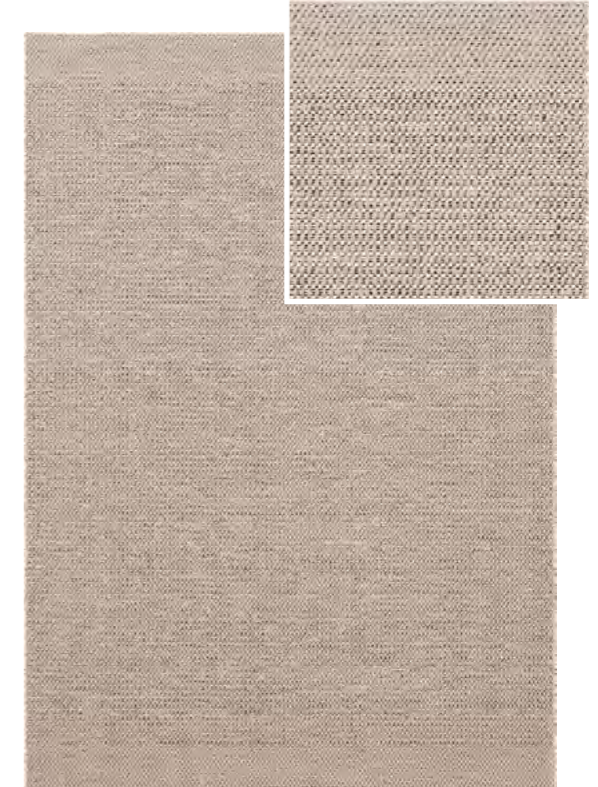
46219-051



46222-651
see picture



46219-651
see picture



46278-651
see picture



46279-051



46292-561
see picture



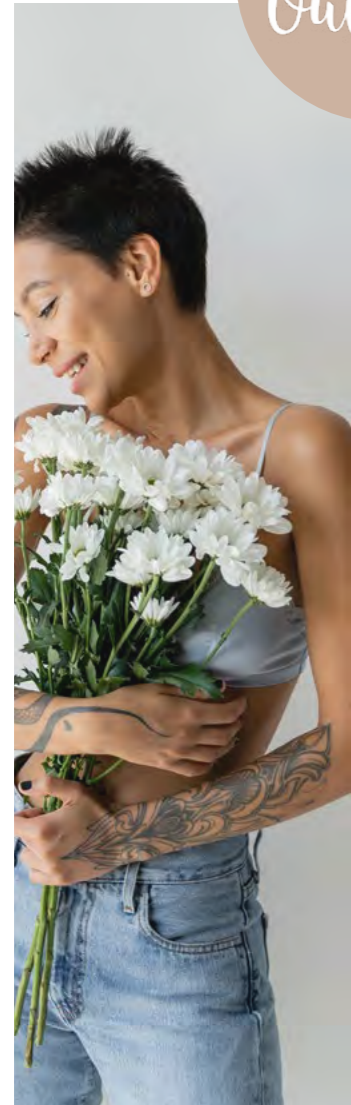
46294-651



46296-651
see picture



In &
Outdoor

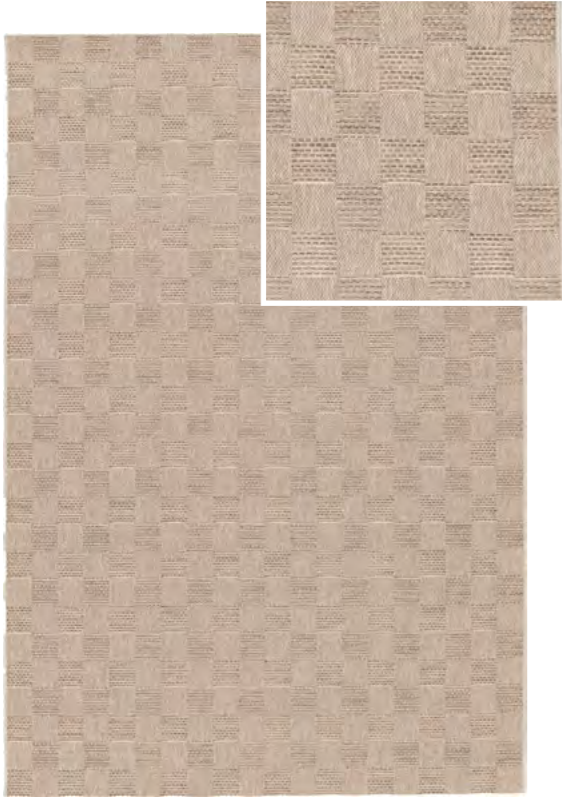


46423-651
see picture

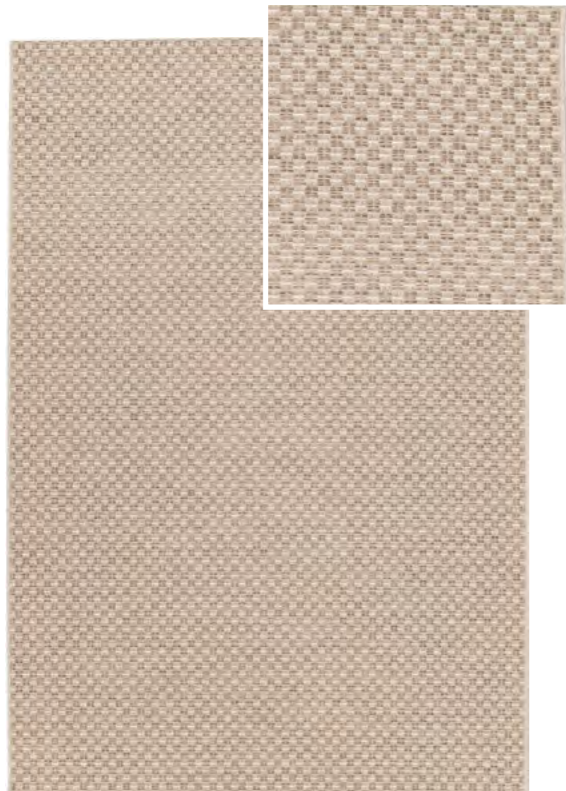


46432-651
see picture





46454-051
see picture



46455-651



46456-651

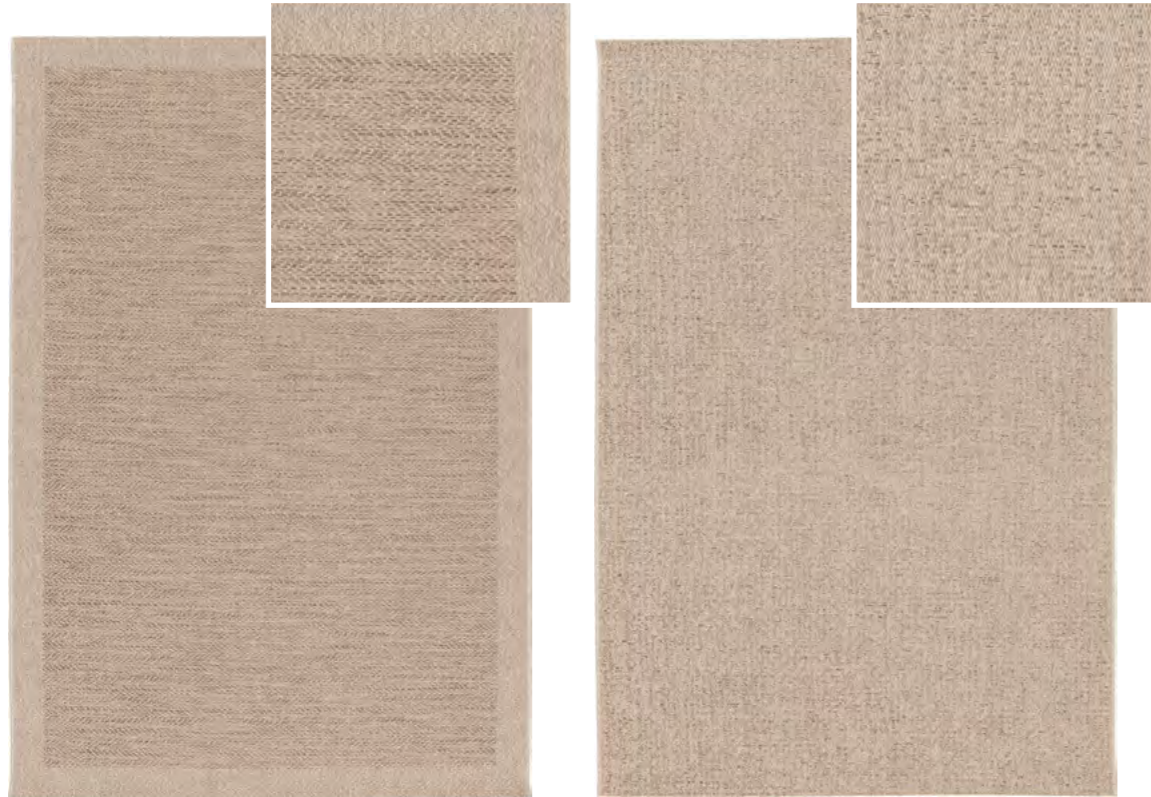


46457-651
see picture



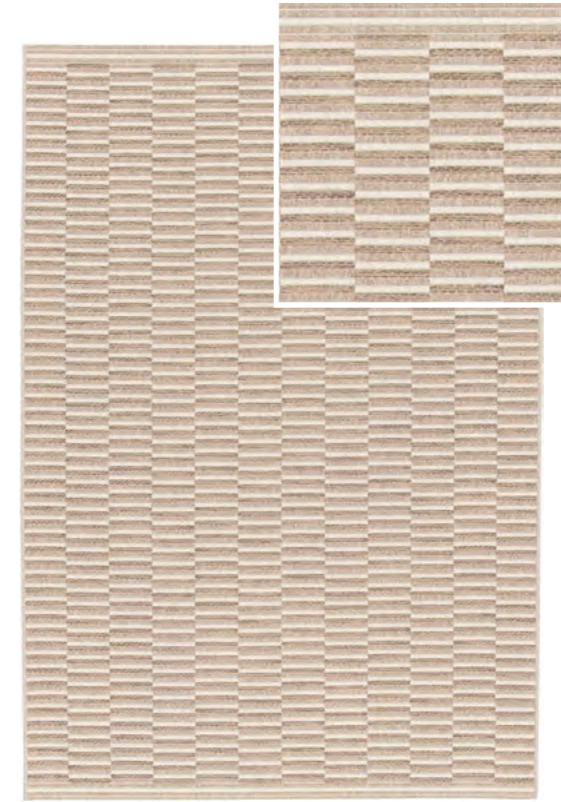
46458-051
see picture





46459-051
see picture

46461-651



46462-651
see picture



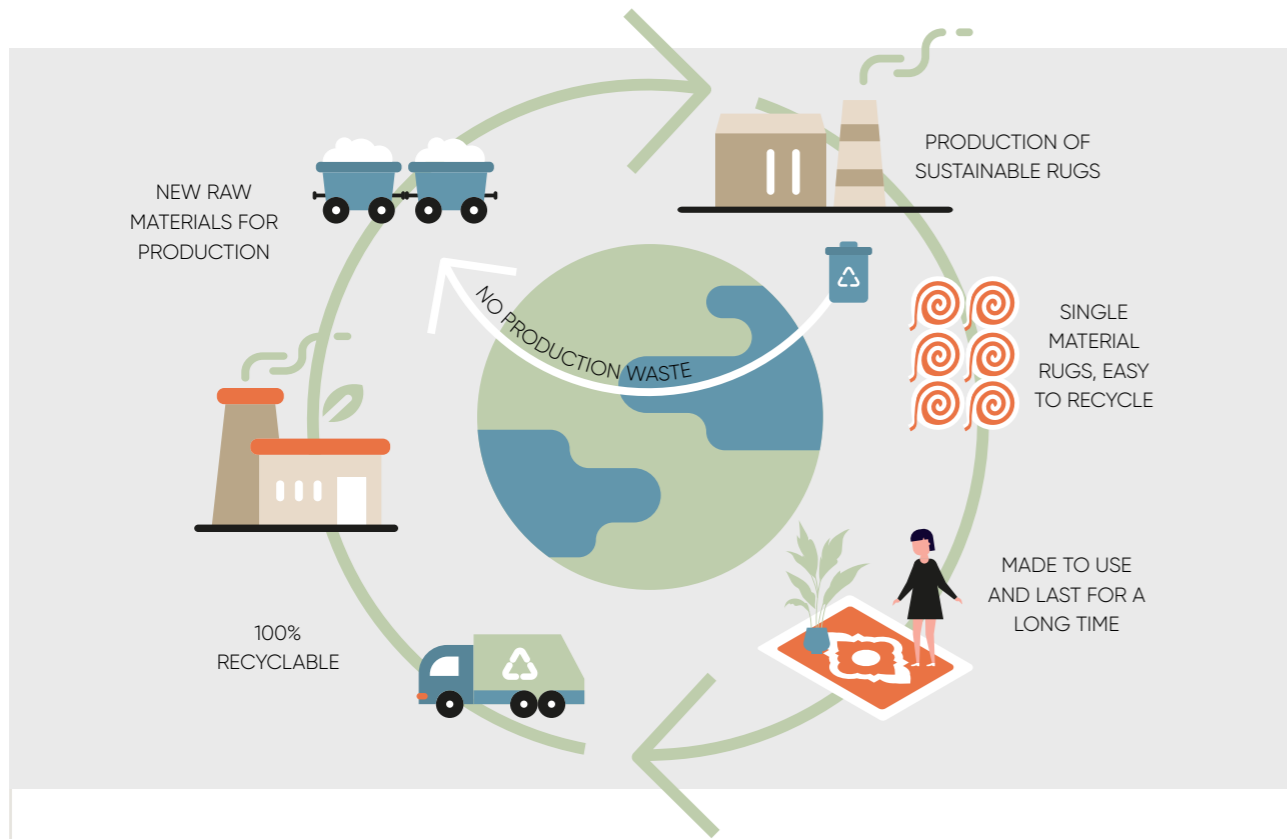
46463-651

		80	120	160	200
		150	170	230	290
46201	051				
46203	651				
46204	651				
46206	051				
	651				
46207	051				
	651				
46209	651				
46213	051				
	551				
46215	051				
	651				
46218	051				
46219	051				
	651				
46222	651				
46278	651				
46279	051				
46292	561				
46294	651				
46296	651				
46423	651				
46432	651				
46454	051				
46455	651				
46456	651				
46457	651				
46458	051				
46459	051				
46461	651				
46462	651				
46463	651				

* Size 080x150 is packed in multiples of 5



THE RUGS IN THIS LEAFLET ARE THE FIRST **CRADLE TO CRADLE CERTIFIED®** AREA RUGS IN THE WORLD.



WHAT?

CRADLE TO CRADLE CERTIFIED® IS A GLOBALLY RECOGNIZED STANDARD FOR SAFER, MORE SUSTAINABLE PRODUCTS MADE FOR THE CIRCULAR ECONOMY.

According to its principles, end-of-life products should serve as ingredients in new manufacturing processes (technical cycle) or as nutrients in the biological cycle, eliminating waste.

LESS FOOTPRINT. MORE RUG.

balta

BALTA HOME OBTAINED THIS CERTIFICATION ON SEPTEMBER 10, 2021.



HOW TO BECOME CERTIFIED?

IN ORDER TO BECOME CRADLE TO CRADLE CERTIFIED® OUR RUGS WERE ASSESSED FOR **ENVIRONMENTAL AND SOCIAL PERFORMANCE** ACROSS 5 CATEGORIES:



1. MATERIAL HEALTH

Ensuring that our rugs are made using raw materials that are as safe as possible for humans and the environment.



3. RENEWABLE ENERGY & CARBON MANAGEMENT

Ensuring that our rugs are manufactured using renewable energy; 61,150 solar panels fuel our Belgian production plants to reduce the impact of climate changing greenhouse gases due to the manufacturing of our rugs.



2. MATERIAL REUTILIZATION

Eliminating the concept of waste by helping to ensure that products remain in perpetual cycles of use and reuse from one product use cycle to the next.



4. WATER STEWARDSHIP

Ensuring that water is recognized as a valuable resource, watersheds are protected and clean water is available to people and all other organisms. Our 2 water treatment plants purify the process water of our Belgian production plants.



5. SOCIAL FAIRNESS

Designing business operations that honor all people and natural systems affected by the manufacturing of our rugs.

balta home

DESIGNED AND PRODUCED
BY BALTA HOME

+32 56 62 22 11
INFO@BALTAGROUP.COM
WWW.BALTA-HOME.COM

DUE TO EXTERNAL FACTORS,
COLOURS MIGHT DEVIATE
FROM REAL COLOURS - SOME
IMAGES IN THIS CATALOG ARE
AI-GENERATED.



STANDARD
100

1803035
Centexbel

Cradle to Cradle Certified
IS A REGISTERED TRADEMARK OF THE
CRADLE TO CRADLE PRODUCTS
INNOVATION INSTITUTE

Fireproof US Norm
CFR 1630 & 1631



© **WARNING**
ALL RIGHTS RESERVED.
The images and products in
this leaflet are copyrighted.

© **BALTA INDUSTRIES NV**
Wakkensteenweg 2 -8710
Sint-Baafs-Vijve, Belgium

03 2025