



**PP**  
**LOOPS**

# NEW GENERATION RUGS

**LOOPS**



# TWIGGY

**PP:** 100% POLYPROPYLENE





**71531-010**  
Cream + Red/Blue  
see picture



**71531-050**  
Cream + Sisal/Grey  
see picture



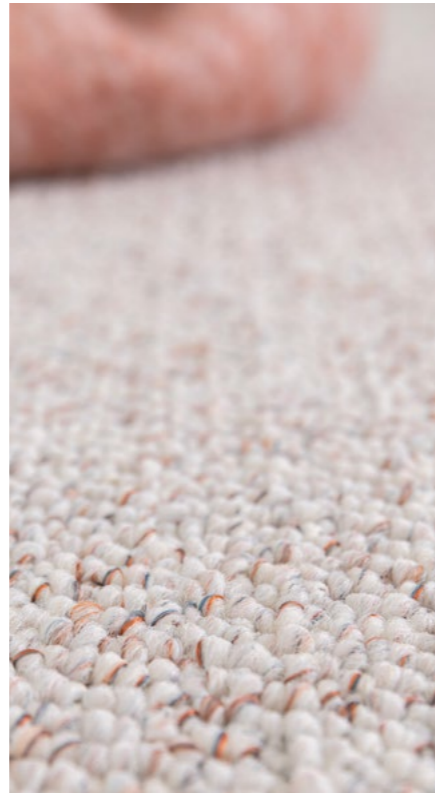
**71531-060**  
Cream + Cream  
see picture



**71531-070**  
Cream + Grey/Black  
see picture



**71531-080**  
Cream + Rust/Antracite  
see picture





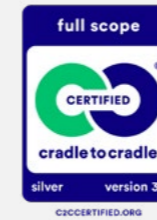
**MACHINE  
WASHABLE &  
TUMBLE DRYER  
PROOF\***

\*Factory tested: 10 x 40° Celcius washed & tumble dried  
Maintenance: [www.clean-rug.com](http://www.clean-rug.com)



**Slip resistant**

Meets the EN 14041 standard: CoF (dynamic coefficient of friction) >0.3 (results between 0.4 and 0.6).



C2C certified:  
**Dolce, Pearl, Pablo,  
Twiggy & Wish**



recyclable rugs



machine washable\*



tumble dryer proof\*



easy to clean



suitable for  
floor heating



soft felt  
backing

# THE RIGHT SIZE FOR EVERY ROOM



Available sizes

## Twigggy

80 120 160 200  
150 170 230 290

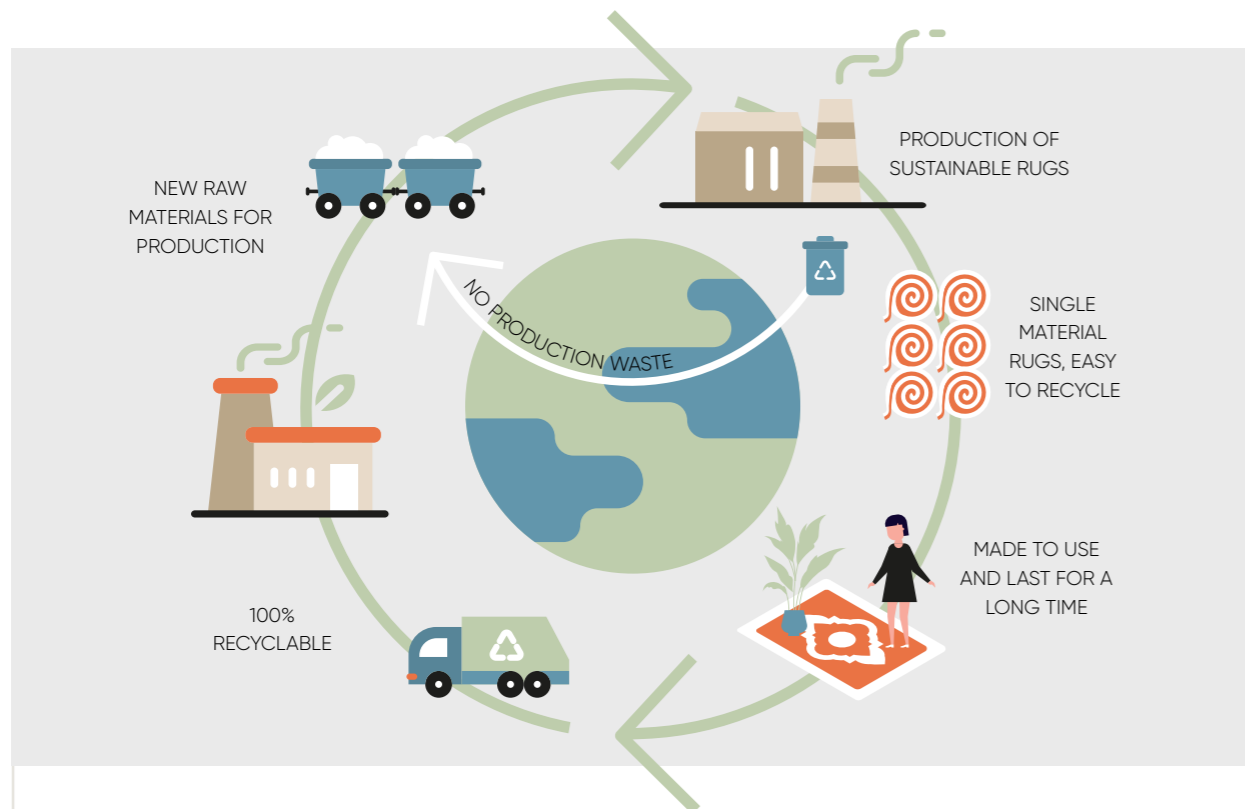
71531

050	■	■	■	■	Clb 5431	
010	■	■	■	■	Clb 5434	
060	■	■	■	■	Clb 5437	
070	■	■	■	■	Clb 5433	
080	■	■	■	■	Clb 5432	

NEED MORE  
INSPIRATION?  
WATCH THE MOVIE!



THE RUGS IN THIS LEAFLET ARE THE FIRST **CRADLE TO CRADLE CERTIFIED®** AREA RUGS IN THE WORLD.



## WHAT?

**CRADLE TO CRADLE CERTIFIED® IS A GLOBALLY RECOGNIZED STANDARD FOR SAFER, MORE SUSTAINABLE PRODUCTS MADE FOR THE CIRCULAR ECONOMY.**

According to its principles, end-of-life products should serve as ingredients in new manufacturing processes (technical cycle) or as nutrients in the biological cycle, eliminating waste.

**LESS FOOTPRINT. MORE RUG.**

**balta**

**BALTA HOME OBTAINED THIS CERTIFICATION ON SEPTEMBER 10, 2021.**



©2CCERTIFIED.ORG

## HOW TO BECOME CERTIFIED?

IN ORDER TO BECOME CRADLE TO CRADLE CERTIFIED® OUR RUGS WERE ASSESSED FOR **ENVIRONMENTAL AND SOCIAL PERFORMANCE** ACROSS 5 CATEGORIES:



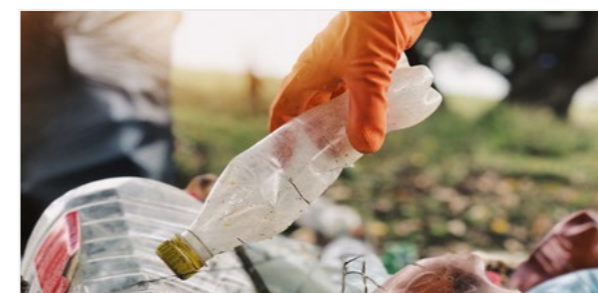
### 1. MATERIAL HEALTH

Ensuring that our rugs are made using raw materials that are as safe as possible for humans and the environment.



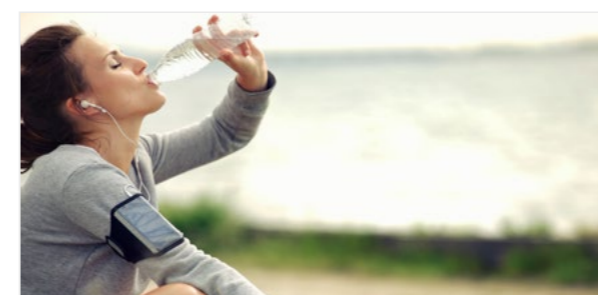
### 3. RENEWABLE ENERGY & CARBON MANAGEMENT

Ensuring that our rugs are manufactured using renewable energy; 61,150 solar panels fuel our Belgian production plants to reduce the impact of climate changing greenhouse gases due to the manufacturing of our rugs.



### 2. MATERIAL REUTILIZATION

Eliminating the concept of waste by helping to ensure that products remain in perpetual cycles of use and reuse from one product use cycle to the next.



### 4. WATER STEWARDSHIP

Ensuring that water is recognized as a valuable resource, watersheds are protected and clean water is available to people and all other organisms. Our 2 water treatment plants purify the process water of our Belgian production plants.



### 5. SOCIAL FAIRNESS

Designing business operations that honor all people and natural systems affected by the manufacturing of our rugs.

# balta home

DESIGNED AND PRODUCED  
BY BALTA HOME

+32 56 62 22 11  
INFO@BALTAGROUP.COM  
WWW.BALTA-HOME.COM

---

DUE TO EXTERNAL FACTORS,  
COLOURS MIGHT DEVIATE  
FROM REAL COLOURS – SOME  
IMAGES IN THIS CATALOG ARE  
AI-GENERATED.

---



STANDARD  
100

1803035  
Centexbel

---

#### Cradle to Cradle Certified

IS A REGISTERED TRADEMARK OF THE  
CRADLE TO CRADLE PRODUCTS  
INNOVATION INSTITUTE

---

Fireproof US Norm  
CFR 1630 & 1631



---

© WARNING  
ALL RIGHTS RESERVED.

The images and products in  
this leaflet are copyrighted.

© BALTA INDUSTRIES NV  
Wakkensteenweg 2 -8710  
Sint-Baafs-Vijve, Belgium

03 2025